

An association of local airport pilots was formed in 1986 as a forum for the users of PWK. Recently, to acknowledge the airport's new name, we became known as the Chicago Executive Pilots' Association. Our mission is to promote the safety of operations and continued development of Chicago Executive Airport in a fraternal environment with the pilots, users, and the community.

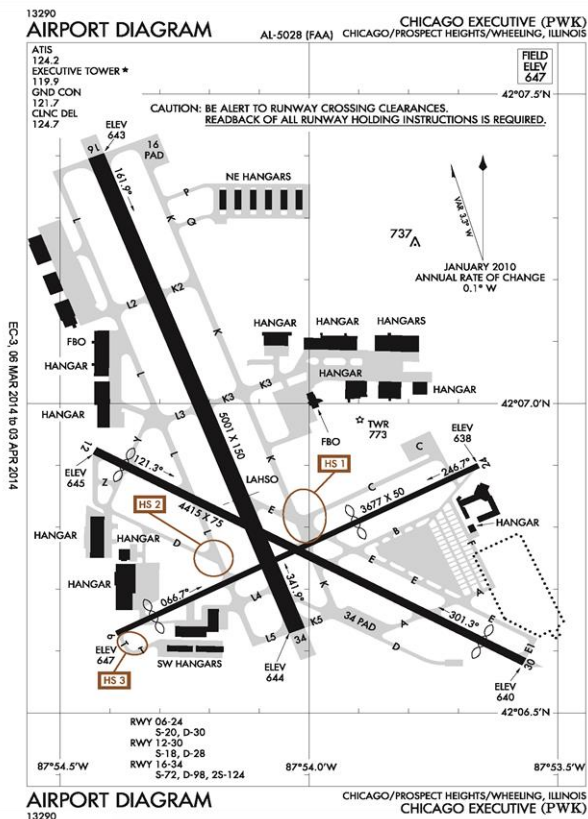
Membership in the Chicago Executive Pilots' Association is open to anyone. Membership dues are \$30.00 annually and include a subscription to the Newsletter. First year Student Pilots or Affiliate Family Members (residing in the same household) pay \$15.00 each.

The Pilots' Association has many ways for you to maximize the advantages of your membership each year, including:

- Five Safety Meetings
- Two Social Events
- Special Outings
- Membership Directory
- Twelve Chicago Executive Pilots' Association Newsletter Issues
- Support for General Aviation Activities
- Special Member Discounts (to be announced)

Chicago Executive Frequencies

ATIS	124.20
Clearance Delivery	124.70
Ground	121.70
Tower	119.90
M-F:	6:00 am - 10:00 pm
S-S:	7:00 am - 10:00 pm
CTAF	119.90
UNICOM	122.95
Chicago Approach	120.55, 125.00
Chicago Departure	120.55, 125.00



EC-3, 06 MAR 2014 to 03 APR 2014

EC-3, 06 MAR 2014 to 03 APR 2014

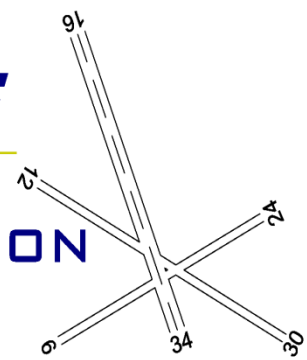
For current PWK Airport Information, please check www.chiexec.com or current FAA notams.

CHICAGO EXECUTIVE PILOTS' ASSOCIATION

For more information please visit our website or email us:

www.pwkpilots.org
papa@pwkpilots.org

**CHICAGO
EXECUTIVE
PILOTS'
ASSOCIATION
KPWK**



**INFORMATION PAMPHLET
AND
MEMBERSHIP APPLICATION**



Chicago Executive Airport
Prospect Heights/Wheeling, Illinois

Chicago Executive Pilots' Association has a lot to offer you.

The people who formed this vital, thriving users group when this airport first became municipal are still working hard to represent the users of our wonderful airport. If you are a renter or an owner, a pilot or a neighbor, a business owner or operator, we have something to offer you.

Our Board of Directors consists of airport business owners, flight instructors, activists and aviators of all sorts.

When the airport was reluctant to open and allow competition from a second FBO, we lobbied hard and won that chance.

When the airport tried to close runway 6/24 we lobbied hard and kept it open.

When the municipalities were in the early stages of ownership, we ran one of our own members as an Alderman from Prospect Heights. That Alderman served on the Palwaukee Municipal Airport Commission. In fact, there have been 3 pilots over the years on the Commission – all Chicago Executive Pilots' Association members! And we would like to see more of them serving on the new Chicago Executive Airport Board. Will you join us in our efforts?

You can help make aviation better for everyone. Join in the work of our strong organization. Be one of the hundreds of people who make the Chicago Executive Pilots' Association successful.

Join us, or join us again. We are stronger together than we are separately. Your organization can speak out for you. We can make a difference.



Please fill out and mail this form along with a check payable to Chicago Executive Pilots' Association:

Chicago Executive Pilots' Association
1005 S Wolf Rd Ste106
Wheeling IL 60090-6408

Annual Dues: \$30.00

Affiliate Family Member: \$15.00

Student Member (first year): \$15.00

Gift to Chicago Executive Pilots' Association Scholarship Fund: \$ _____

Total: \$ _____

You can also complete your membership application on our website, and pay for your membership or renewal using your PayPal account or a credit card.

Date: _____

New Membership _____ Renewal _____

Name: _____

Organization: _____

Address: _____

City: _____ **State:** _____

Zip: _____ - _____

Home phone: _____

Office phone: _____

Cell phone: _____

Email: _____

Name(s) of Affiliate Family Member(s):

Chicago Executive Pilots' Association Safety and Scholarship Fund

Our special fund raising projects have allowed us to offer scholarships to students who live in Illinois and attend an Illinois institution of higher learning in an aviation program.

If you or your child meet the qualifications, you could benefit by receiving a cash award to pay tuition for the school of your choice. See our web site for details.

Pilot Certificate:

Sport Student Private Commercial ATP

Ratings: *Basic VFR Instrument CFI CFII*

Total Flight Hours: ____ **# of Yrs Flying:** ____

Years at PWK: ____ **Member of:** *AOPA EAA*

Flying Club Member? ____

Club Name: _____

Do You Own An Airplane? __ Yes __ No

If Yes, N#: _____ **Type:** _____

Non-Flying Members are welcome:

____ *Neighbor* ____ *Enthusiast*

____ *Mechanic* ____ *Controller*

Would you prefer to receive the monthly Newsletter by ____ *Email* ____ *USPS*

Do you want to participate? ____

as an Officer ? ____

on a Committee ? ____

on the Board ? ____

How should we contact you ? _____